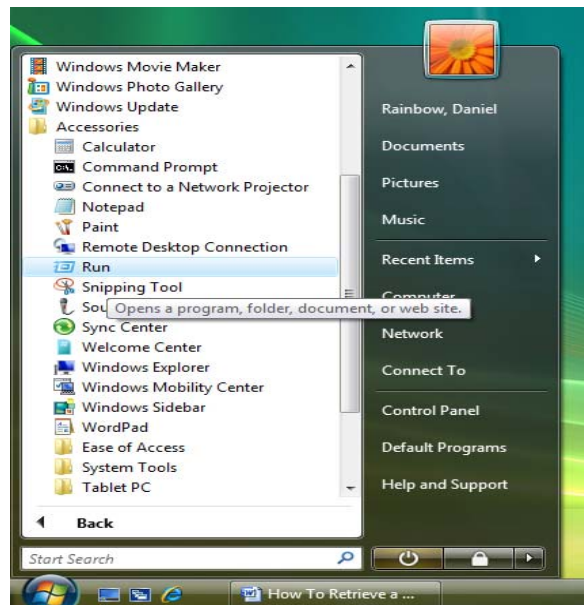


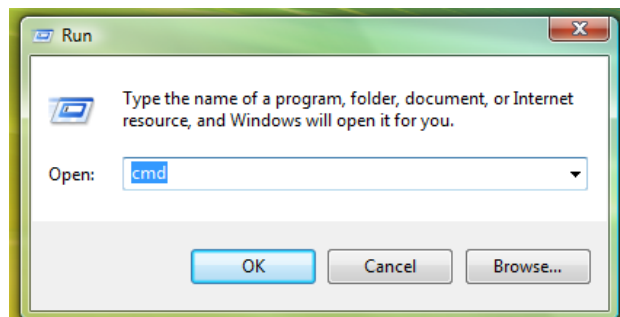
Directions on How to Retrieve a Wireless Physical Address from a Windows Vista PC Laptop Computer

If you are a student or RCC employee, use this process to collect the information to submit the form through the RCC webpage from any computer on campus. If you are a vendor or a sponsored guest, use this procedure to collect the information to give to your sponsoring department and they will submit a work order for your wireless access. To retrieve your Wireless physical address from your computer, you will need to get into your system files. If you are not comfortable with this procedure, please ask for help from someone who is. While the process is fairly simple, RCC will not assume responsibility for your equipment if something goes wrong while using this reference sheet.

First click on the Start Button  → All Programs → Accessories → Run



Type 'cmd' (without the quotes) into the dialog box and press enter on the keyboard or click the OK button.

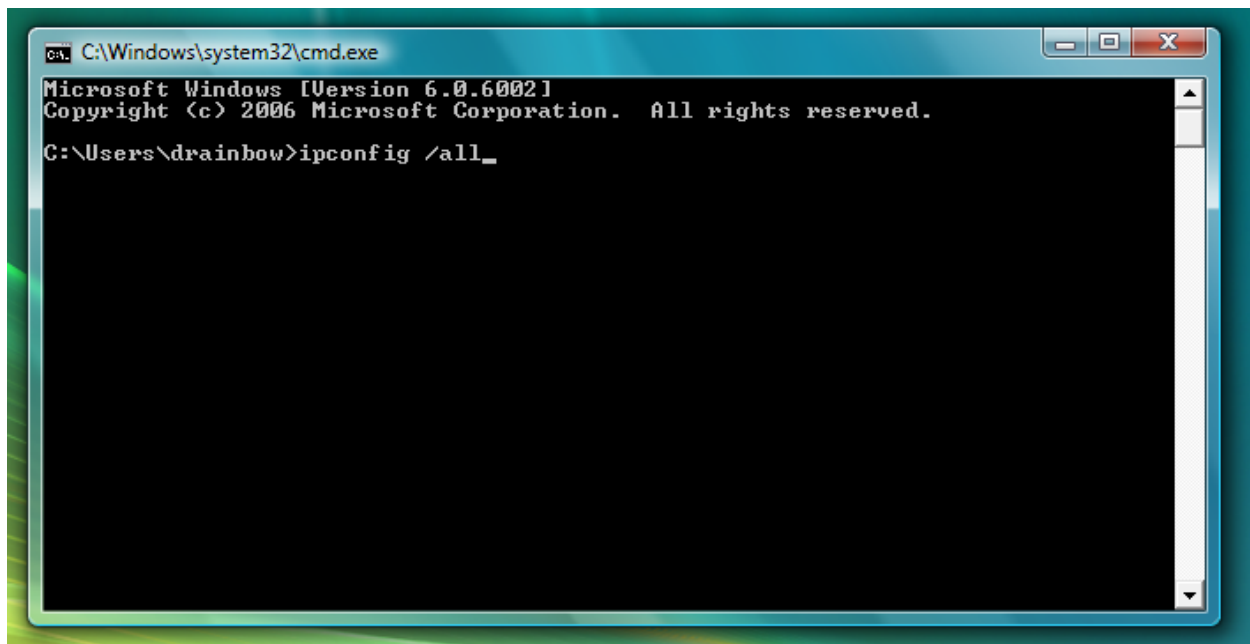


A black window will appear (command prompt) with a blinking cursor in it. It should look something like this (any variation of this should be fine):



```
C:\Windows\system32\cmd.exe
Microsoft Windows [Version 6.0.6002]
Copyright (c) 2006 Microsoft Corporation. All rights reserved.
C:\Users\drainbow>
```

Now type 'ipconfig /all' (again, without the quotes) and press the enter key. It should look like the example below. **Your MUST have the space between 'ipconfig' and the slash.** Also notice the direction of the slash – the top is forward (forward slash).



```
C:\Windows\system32\cmd.exe
Microsoft Windows [Version 6.0.6002]
Copyright (c) 2006 Microsoft Corporation. All rights reserved.
C:\Users\drainbow>ipconfig /all
```

The resulting screen will have many items on it. Look for this text:

“Host Name”:

“Primary Dns Suffix”:

The Primary Dns Suffix is also your **domain name**.

“Wireless LAN adapter Wireless Network Connection:”

Some lines below this you’ll find a listing that resembles this:

“Physical Address” (Be sure this is the WIRELESS LAN adapter Wireless Network Connection, not the Ethernet adapter Local Area Connection)

The 12 digit number sequence separated by dashes is the **Wireless Physical Address** (or MAC address) of your laptop. Any characters that look like O’s – are zeros. Every wireless computer has a different MAC address, so yours is unique. This identifies your laptop and is required to get access to the wireless system at RCC.

```
ca. C:\Windows\system32\cmd.exe
Windows IP Configuration
Host Name . . . . . : Snoopy302
Primary Dns Suffix . . . . . : rccd.net
Node Type . . . . . : Hybrid
IP Routing Enabled . . . . . : No
WINS Proxy Enabled . . . . . : No
DNS Suffix Search List . . . . . : rccd.net

Ethernet adapter Local Area Connection:
Connection-specific DNS Suffix . . . : rccd.net
Description . . . . . : Intel(R) 82562GT 10/100 Network Connection
Physical Address . . . . . : 00-1A-4B-76-BB-F2
DHCP Enabled. . . . . : Yes
Autoconfiguration Enabled . . . . . : Yes
Link-local IPv6 Address . . . . . : fe80::3194:2aac:7b62:c6c7%9<Preferred>
IPv4 Address. . . . . : 10.10.134.149<Preferred>
Subnet Mask . . . . . : 255.255.255.0
Lease Obtained. . . . . : Wednesday, September 23, 2009 10:13:44 AM
Lease Expires . . . . . : Wednesday, September 30, 2009 10:13:37 AM

Default Gateway . . . . . : 10.10.134.1
DHCP Server . . . . . : 10.10.50.172
DHCPv6 IAID . . . . . : 234887755
DHCPv6 Client DUID. . . . . : 00-01-00-01-0E-EA-0F-87-00-1C-BF-30-93-93

DNS Servers . . . . . : 10.10.50.172
10.20.50.251
10.30.50.249
NetBIOS over Tcpip . . . . . : Enabled

Wireless LAN adapter Wireless Network Connection:
Media State . . . . . : Media disconnected
Connection-specific DNS Suffix . . . : rccd.net
Description . . . . . : Intel(R) PRO/Wireless 3945ABG Network Connection
Physical Address . . . . . : 00-1C-BF-30-93-93
DHCP Enabled. . . . . : Yes
Autoconfiguration Enabled . . . . . : Yes

Tunnel adapter Local Area Connection* 10:
Media State . . . . . : Media disconnected
Connection-specific DNS Suffix . . . : rccd.net
Description . . . . . : Teredo Tunneling Pseudo-Interface
Physical Address . . . . . : 02-00-54-55-4E-01
DHCP Enabled. . . . . : No
Autoconfiguration Enabled . . . . . : Yes

Tunnel adapter Local Area Connection* 11:
Media State . . . . . : Media disconnected
Connection-specific DNS Suffix . . . : rccd.net
Description . . . . . : isatap.rccd.net
Physical Address . . . . . : 00-00-00-00-00-00-00-E0
DHCP Enabled. . . . . : No
Autoconfiguration Enabled . . . . . : Yes
```