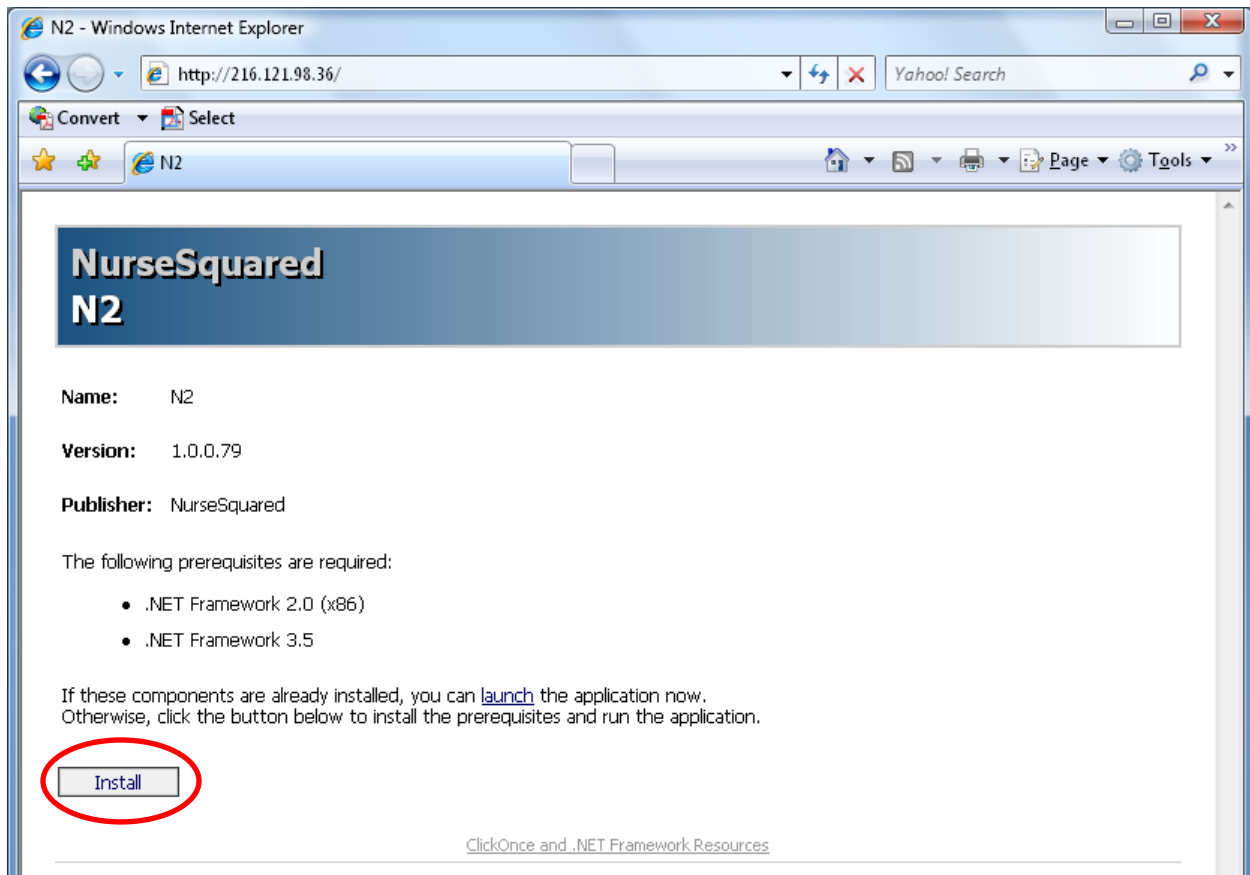


These instructions will assist you in downloading and installing the NurseSquared System onto your computer.

Step 1. Open Internet Explorer and go to the following url:

<http://216.121.98.36/>

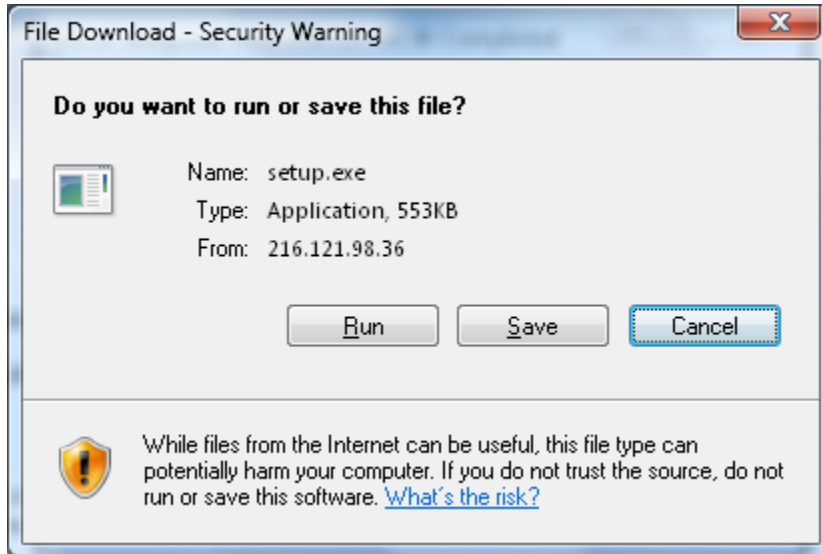
You will be presented with the Install Webpage.



To begin the Install process, simply click on the **Install** button on the lower left of the webpage.

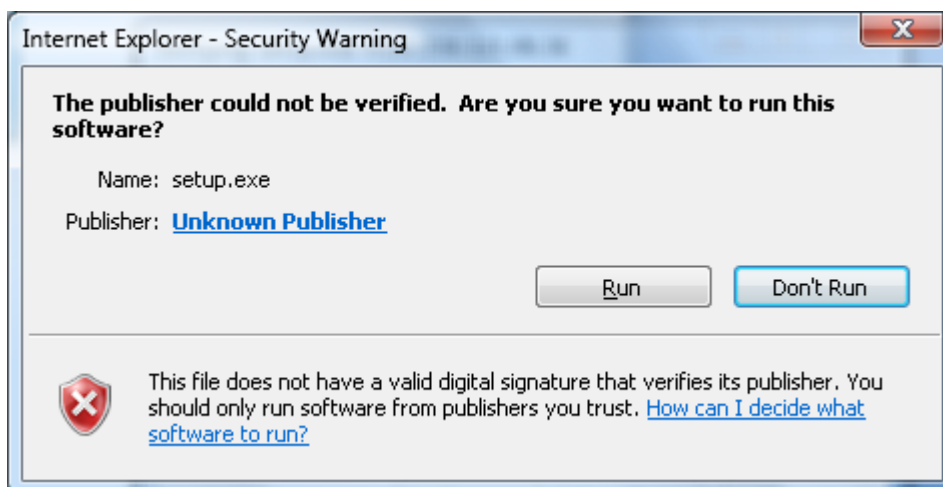
Step 2.

Next, Select **RUN** from the file download message box.



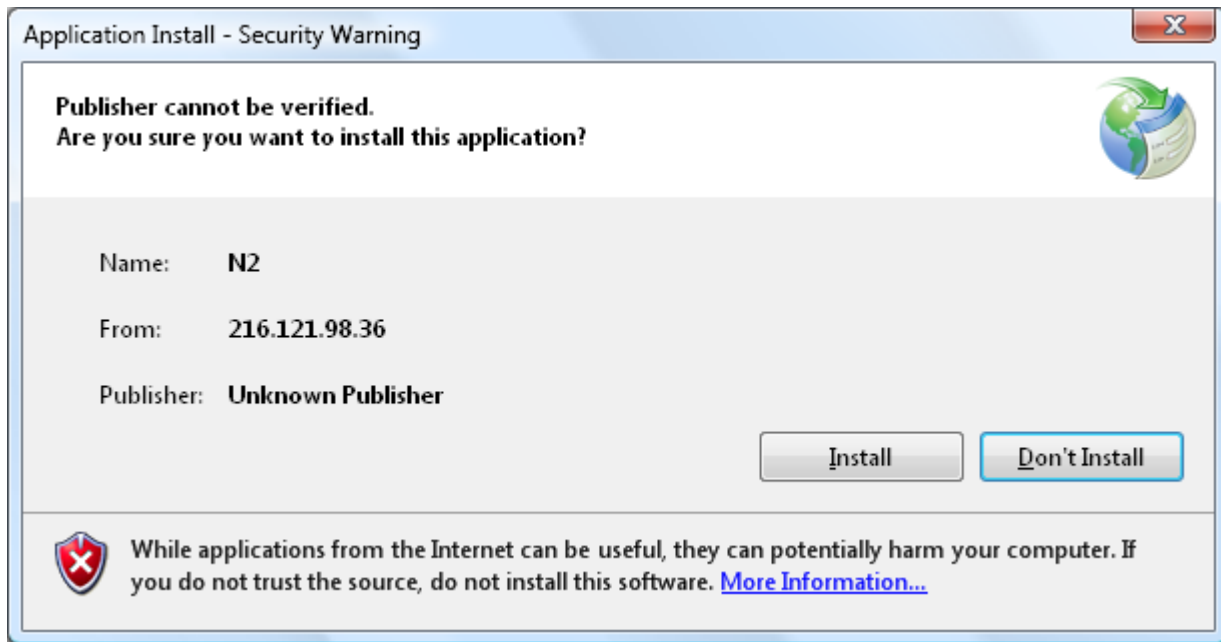
Step 3.

Next, Select **RUN** from the file run message box



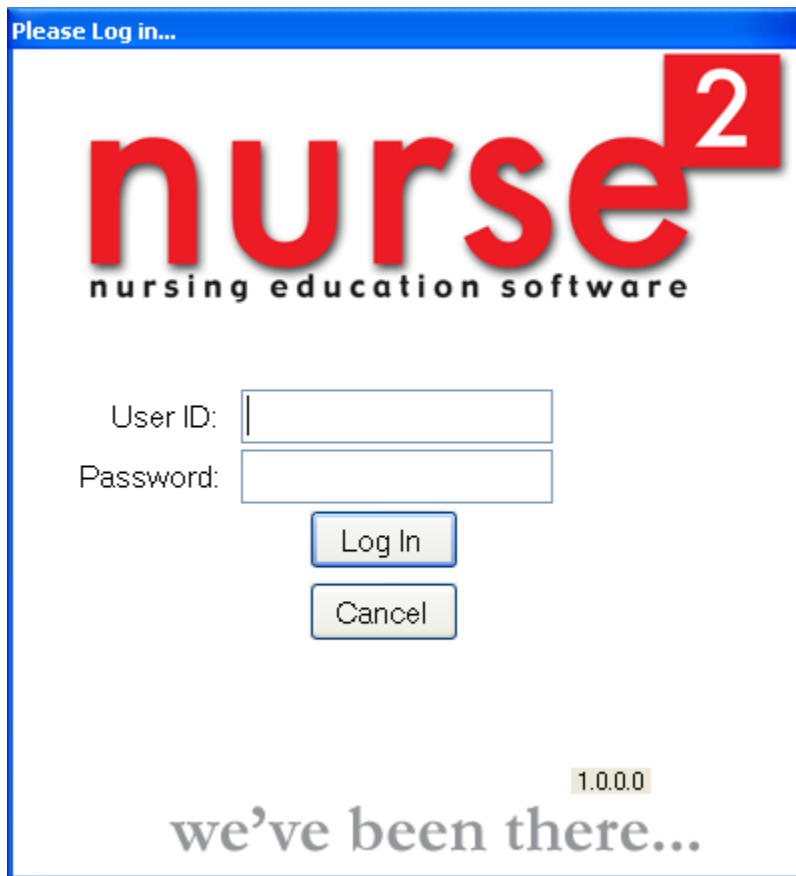
Step 4.

Next, Select **Install** from the install message box. The software should begin downloading automatically. Depending on your connection speed, it may take a few minutes to completely download the software.



Once the software has finished downloading, the software will start automatically. ...

After downloading, you should be presented a screen like the one shown below.



To Log in and start the NurseSquared System, simply:

Type your Student Number into the User ID Textbox

Type **Password1** into the password box.

(This is the default password, and you will be asked to change your password once you are logged into the software.)

Trouble Shooting:

If you have any problems downloading the Prerequisite **Microsoft Framework 3.5**, please take the following steps:

Cancel the install of the software by Selecting Cancel from the active message box.

Then, go to the following link:

<http://www.microsoft.com/downloads/details.aspx?FamilyId=333325FD-AE52-4E35-B531-508D977D32A6&displaylang=en>

Select the “Download” button, and follow the prompts from Microsoft to Install Microsoft .Net Framework 3.5.

AFTER the Microsoft .Net Framework 3.5 has completed downloading, you may restart at STEP 1 in these instructions to install the NurseSquared Software.

If you have any other problems installing the NurseSquared Software, please inform your Instructor.