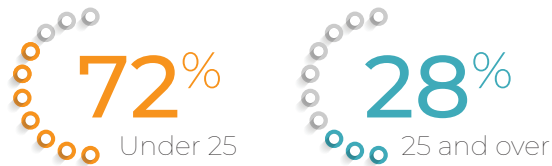
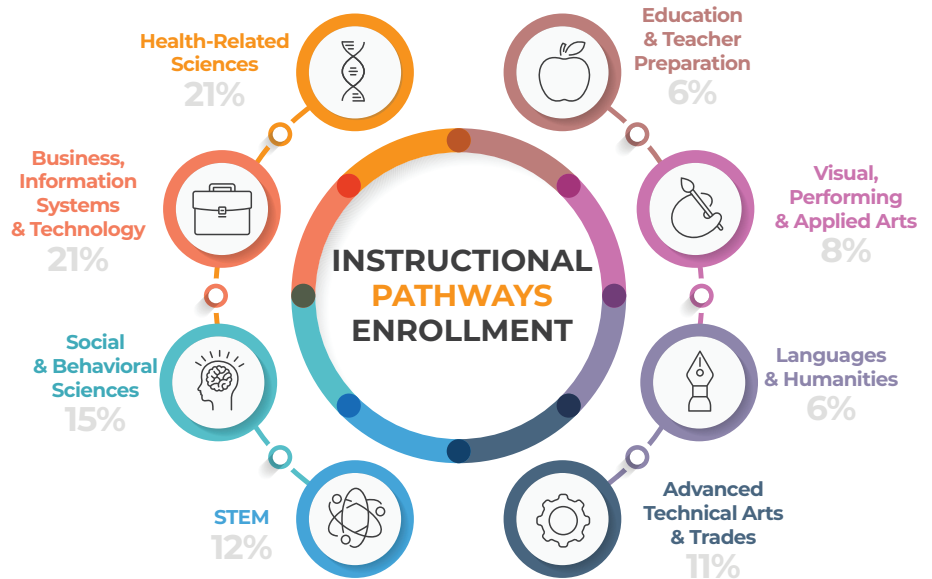
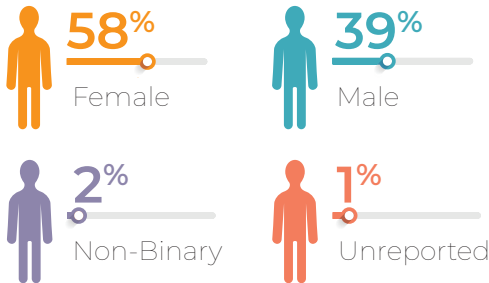


Headcount
21,650

Age

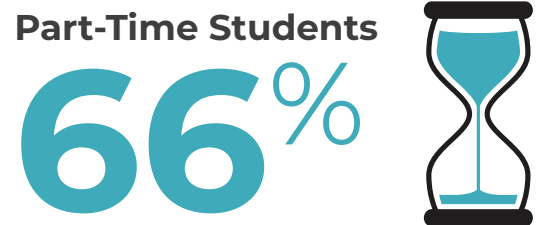
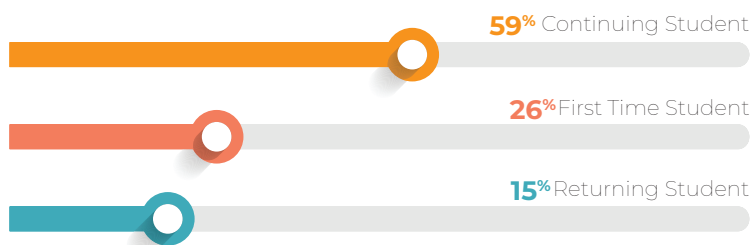


Gender

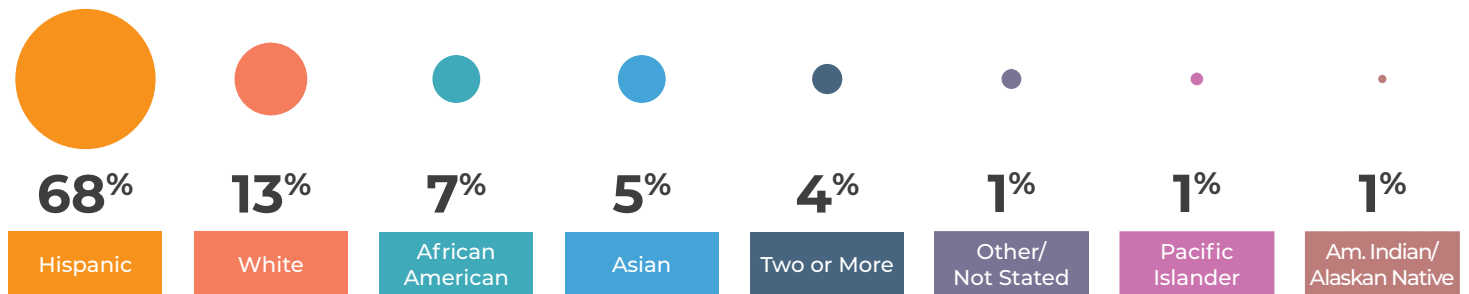


Spring 2023 Course
Success Rate
68%

Fall Student Enrollment by Type



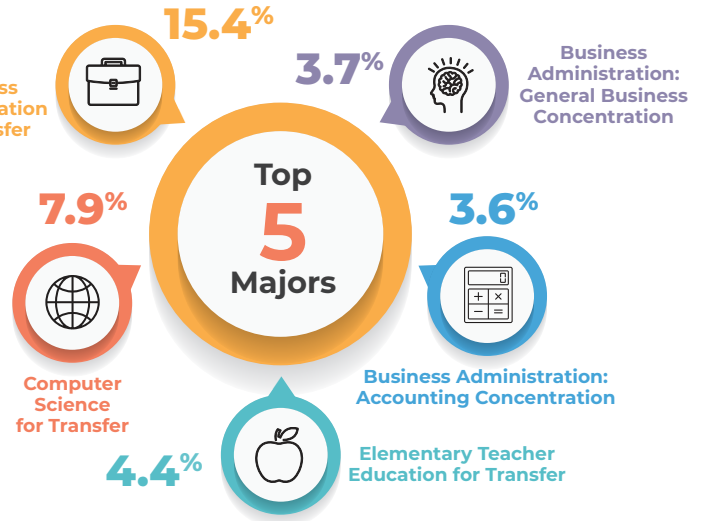
Race



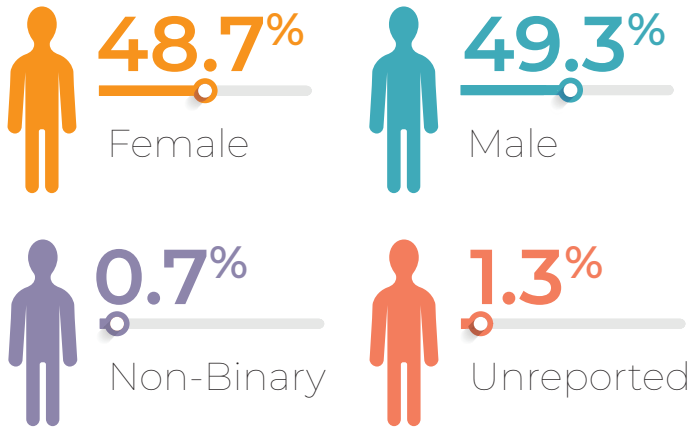
CTE Quick Facts Fall 2023

As of Census

Headcount
8,038

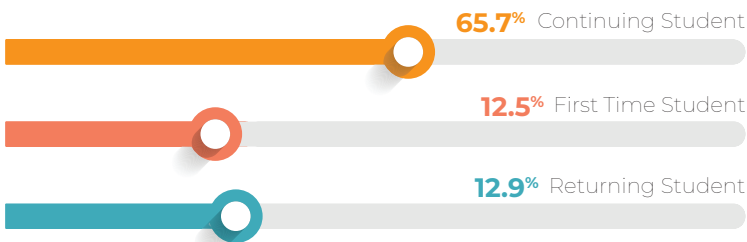


Gender



Spring 2023 Course Success Rate
65.8%

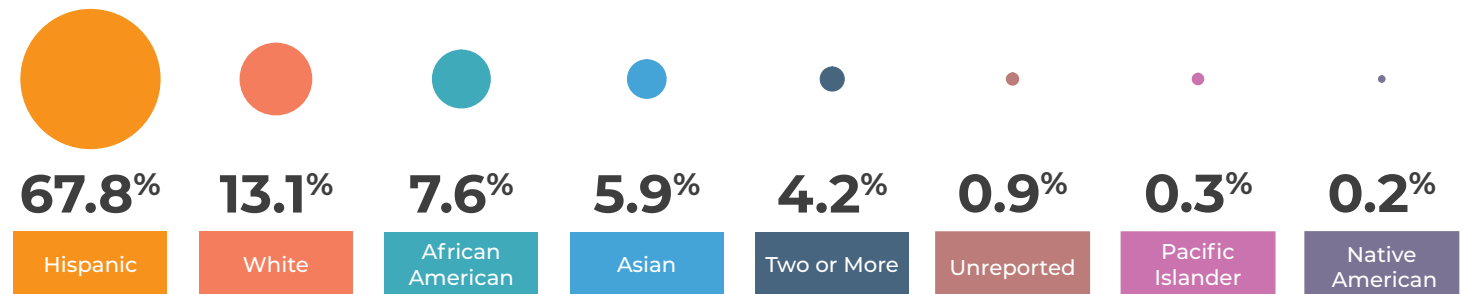
Fall Student Enrollment by Type



Full-Time Students
35.2%

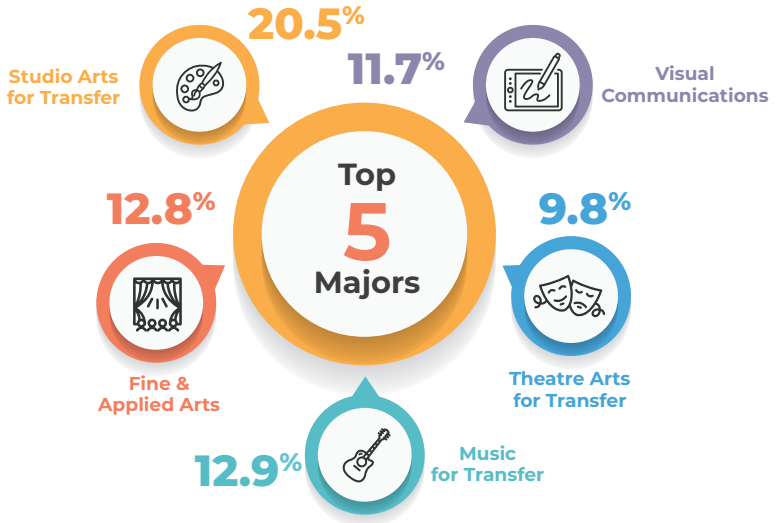
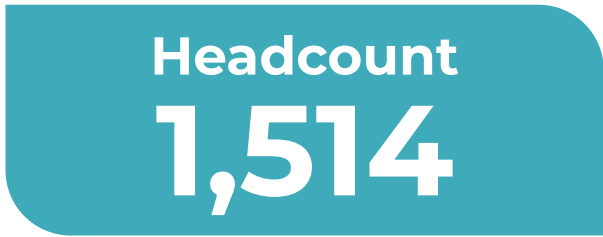
Part-Time Students
64.8%

Race

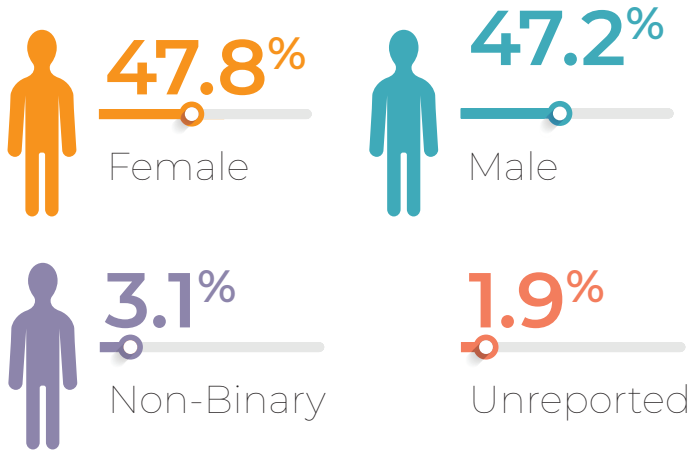


F&PA Quick Facts Fall 2023

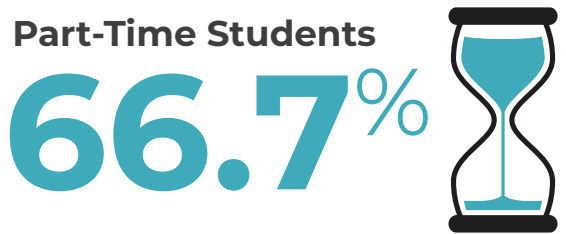
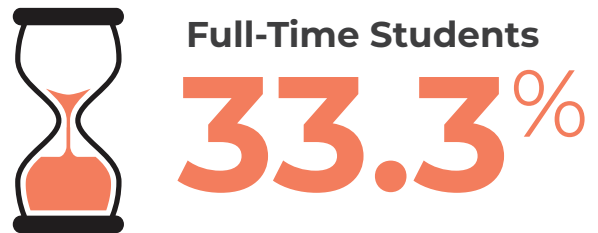
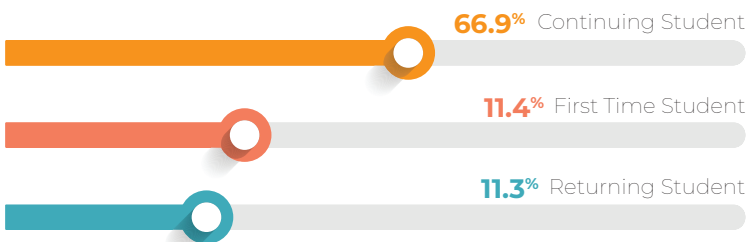
As of Census



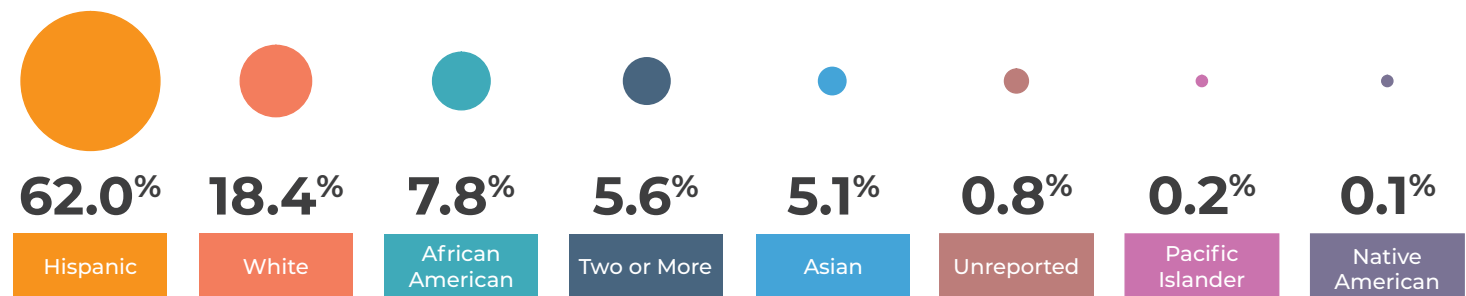
Gender



Fall Student Enrollment by Type



Race

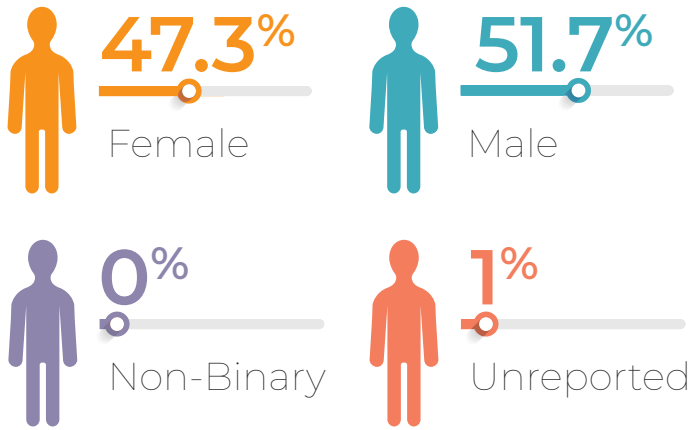


Kinesiology Quick Facts Fall 2023

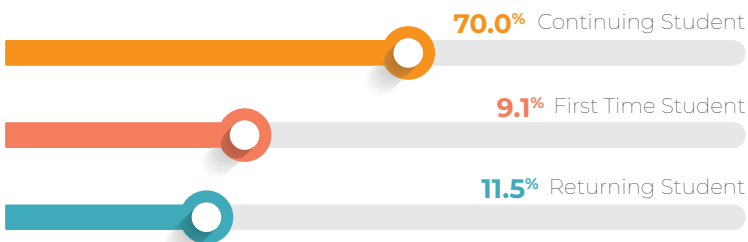
As of Census

Headcount
603

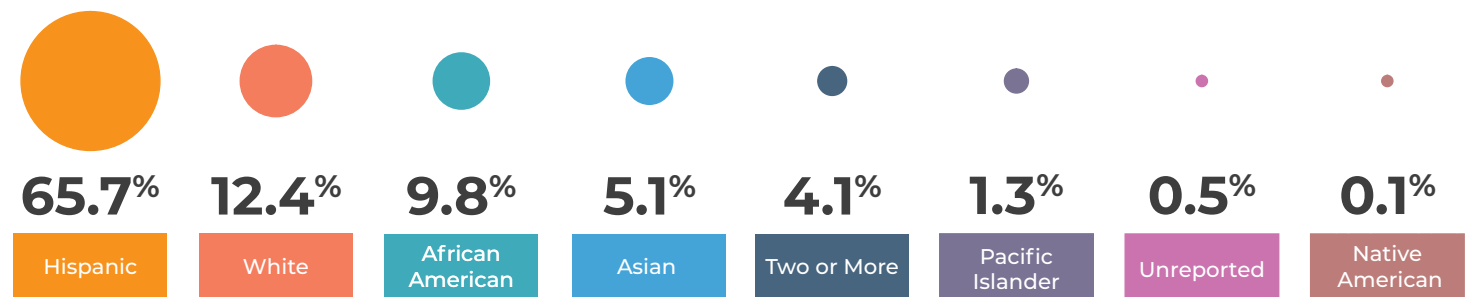
Gender



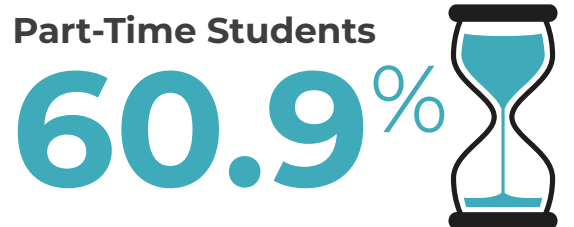
Fall Student Enrollment by Type



Race



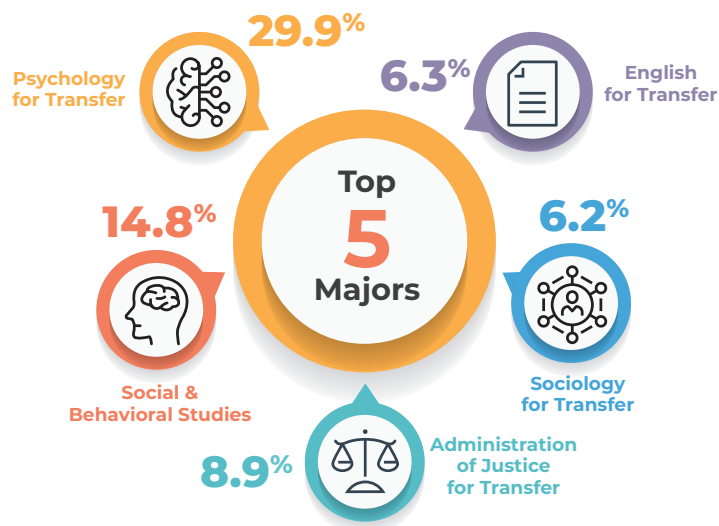
Spring 2023 Course Success Rate
83.0%



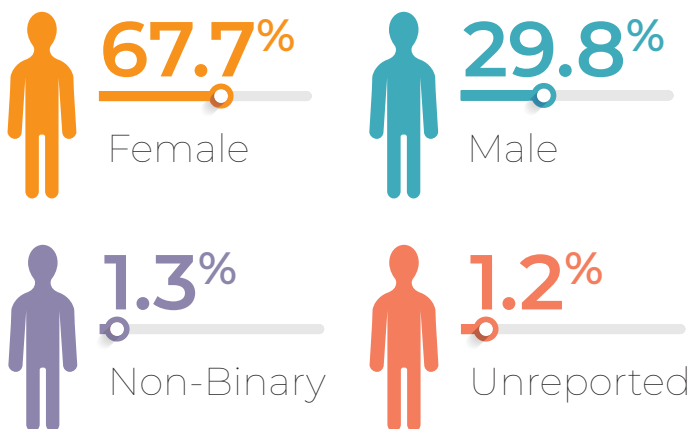
LHSS Quick Facts Fall 2023

As of Census

Headcount
4,550

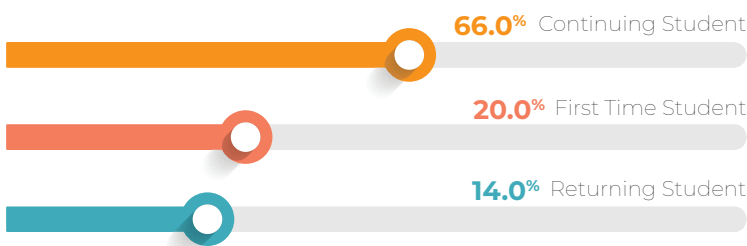


Gender



Spring 2023 Course
Success Rate
66.3%

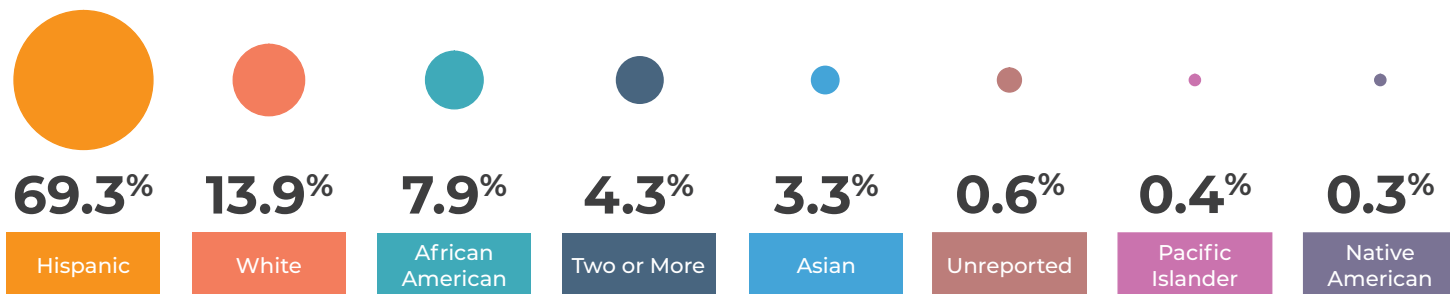
Fall Student Enrollment by Type



Full-Time Students
35%

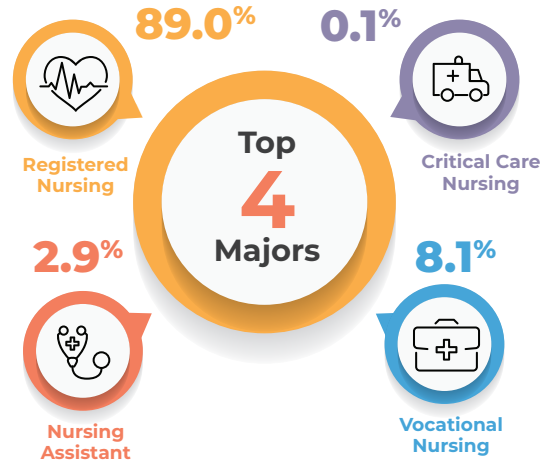
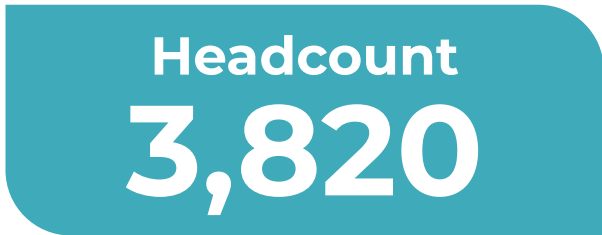
Part-Time Students
65%

Race

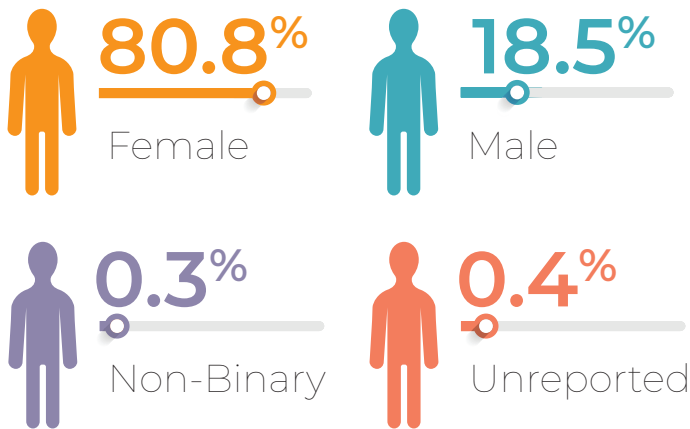


Nursing Quick Facts Fall 2023

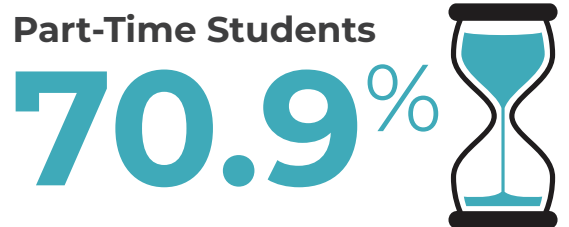
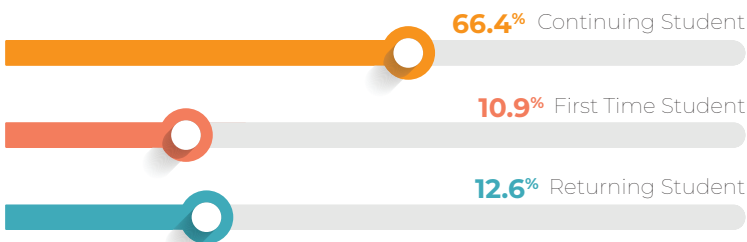
As of Census



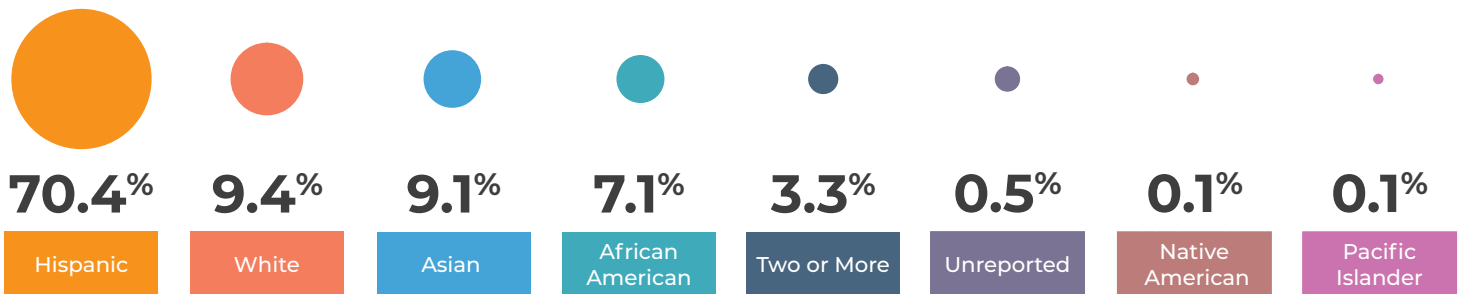
Gender



Fall Student Enrollment by Type



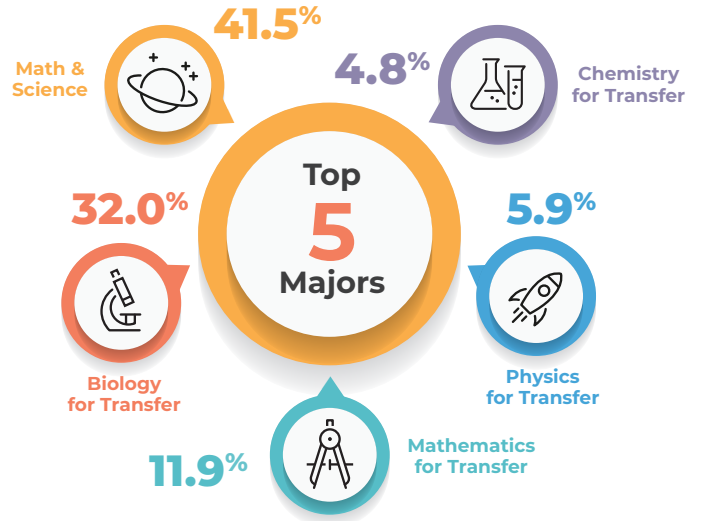
Race



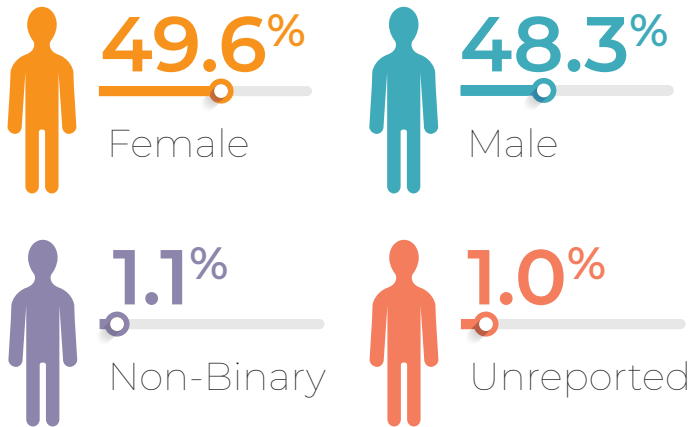
STEM Quick Facts Fall 2023

As of Census

Headcount
2,611

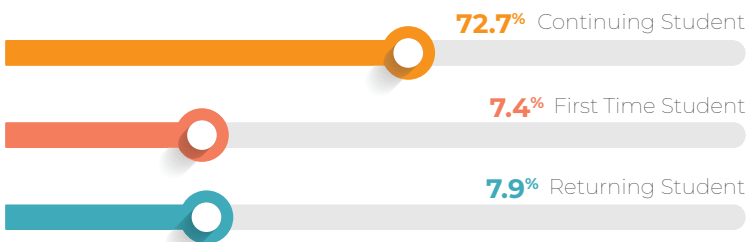


Gender



Spring 2023 Course
Success Rate
57.5%

Fall Student Enrollment by Type



Full-Time Students
38.5%

Part-Time Students
61.5%

Race

